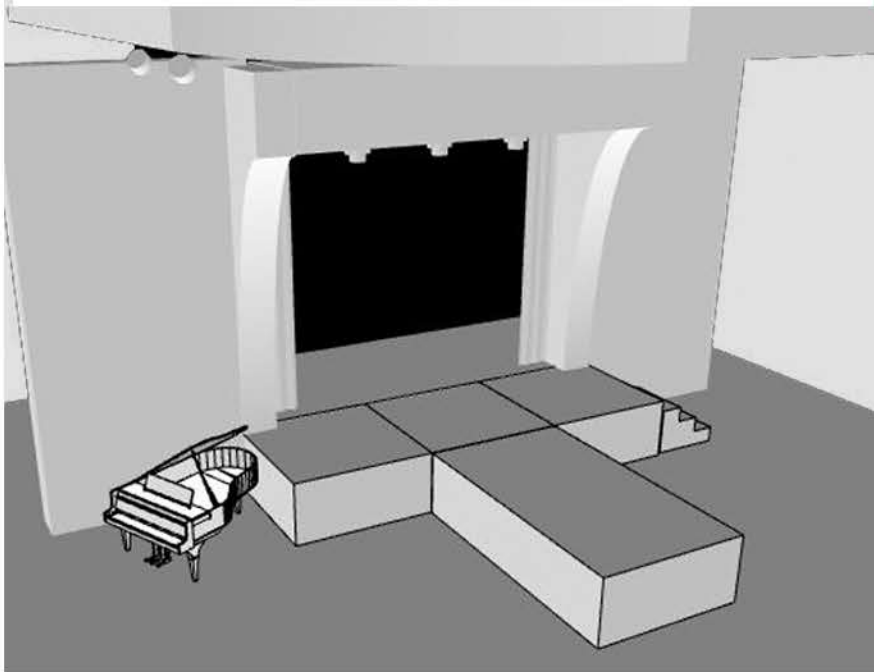
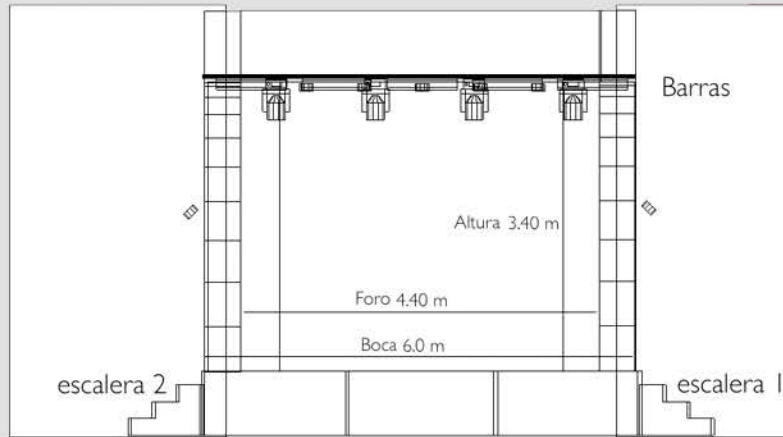


m  
El Molino  
BARCELONA

El Molino





## MEASUREMENTS

The stage is provided with 4 hydraulic platforms, including a walkway, which allows different configurations according to your needs.

In addition to the sound and lighting stage equipment, you can find a giant LED screen (4,80x2,88 mt) at the background.

You can also find a truss at the 2 amphitheatre to do aerial performances.

### Stage without platforms:

Width 4,40m  
Long 2,70m

### Stage with platforms:

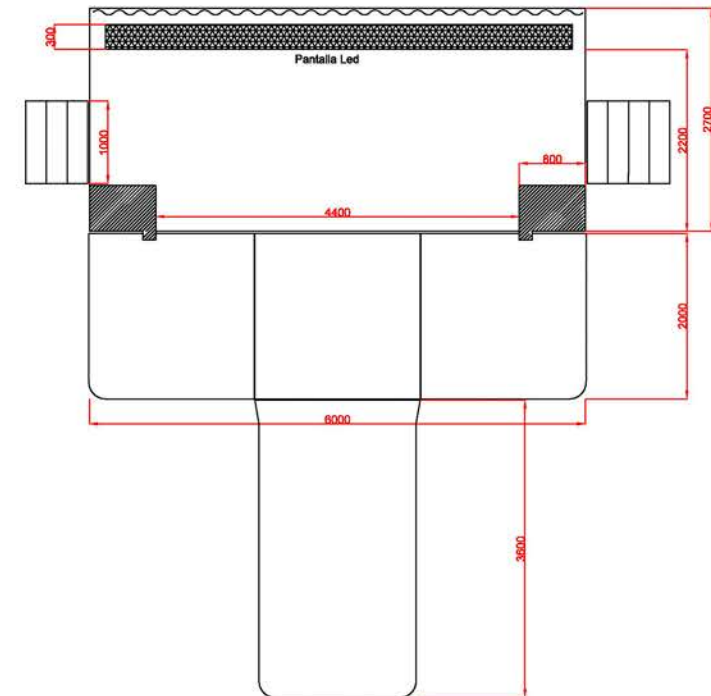
Width 6,00m  
Long 4,70m

### Walkway:

Width 1,90m  
Long 3,60m

### Others:

- Minimum height 3,40m
- 2 stairs on both sides of backstage to return
- 2 modular stairs to access to stage from stalls





## LIGHT SISTEM

The entire architecture of El Molino is backlit with LED RGB: stair rails, amphitheaters walls, amphitheaters, stage arc, etc. The lighting of the bars is also controlled from the lighting table on the cabin.

It is also able to regulate the intensity and color of the Golden Bar architecture.

### ROBOTIZED

5x Coemar Infinity Spot S  
4x Mark BEAM 280 (7R)  
5x Coemar iWash LED  
2x Acme BEAM

### FIXED

21x Coemar PAR LED  
5x Coemar Barras LED

### SMOKE MACHINES

2x MARTIN MAGNUM 1800  
1x hazer MARTIN JEM ZR24/7



Spot Coemar 250Lx



PAR Led RGB



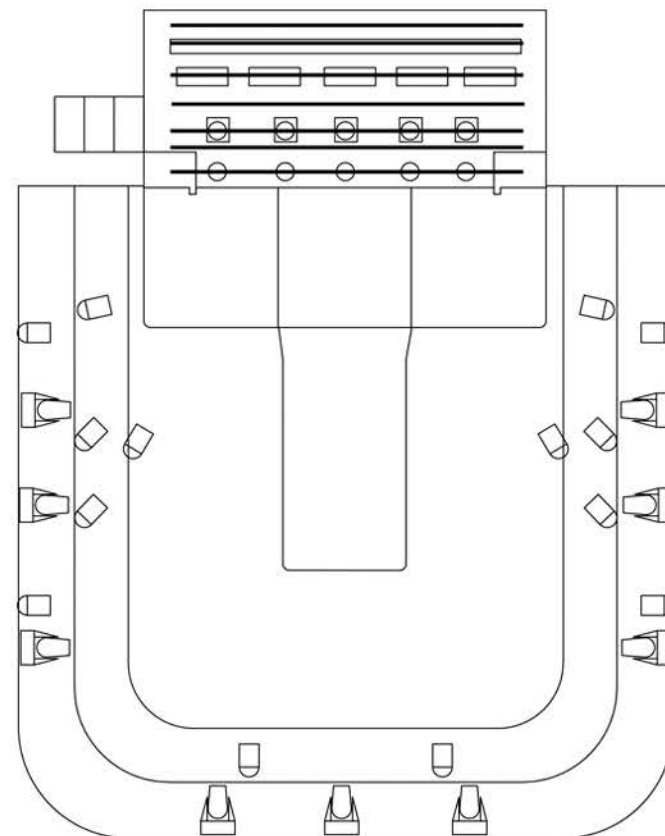
Wash Led RGB



Rampas Led RGB



Par Led RGB



## SOUND SYSTEM (I)

The theater is provided with amplification, a control table and a DJ set, consisted of a mixer and two CD players and a 2m long stand. It also has an average tail piano Hosseschrueders GP-148E (usually tuning pitch 442), that can be on or off the stage.

In compliance with the city government regulations, **the maximum sound level is 96 dB** limited by processor.

### MAIN PA

Full Range: 2x 1100W (2200W Peak) - JBL VP Series (Bi-Amp) VP7212-95DP  
Subwoofers: 2x 1800W (3600W Peak) - JBL VP Series VPSB7118DP

### REINFORCEMENT

#### Stalls:

- 2x 875W (1750W Peak) - JBL VP Series (Bi-Amp) VP7210-95DP
- 2x 500W (1000W Peak) - JBL PRX 512M

#### Ceilings:

- 8x 150W - JBL 8100 Series CONTROL 47LP

#### Front fiels 1st floor:

- 2x 500W (1000W Peak) - JBL AE Compact

#### 1st floor ceilings:

- 6x 150W - JBL 8100 Series CONTROL 47LP

#### Front fiels 2nd floor:

- 2x 500W (1000W Peak) - JBL AE Compact

#### 2nd floor ceilings:

- 6x 150W - JBL 8100 Series CONTROL 47LP

### STAGE

Side Fiels: 2x 500W (1000W Peak) - JBL AE Compact

#### Monitors:

- 2x 500W (1000W Peak) - JBL PRX 512M
- 2x 875W (1750W Peak) - JBL VP Series (Bi-Amp) VP7210-95DP

### CONTROL

#### SOUND & PATCH TABLE:

- MIDAS M32
  - STAGEBOX MIDAS DL16
- #### REPRODUCTION:
- iMAC with Qlab and Resolume
  - 2 CD players

### DJ SET

- 2x NUMARK NDX 400
- 1X NUMARK M8

#### AT STALLS:

It is possible to extend the system with 2 monitors (not provided by El Molino), but never can exceed 500W RMS each one, and is not possible to use sub-bass focused on the dance floor.

#### AT THE GOLDEN BAR:

It is forbidden to install sound systems on the outside terrace and the volume will be controlled by the resident technician.



## SOUND SYSTEM (II)

The theater is also provided with microphone and intercom system, with loudspeaker system at the backstage and dressing rooms. A camera with remote control mode allows both (backstage and dressing rooms) to monitor stage audio and video.

Corridors, stairs and bathrooms of all the building are provided with the sound of the stage.

### MICROPHONE SYSTEMS:

#### RF - WIRELESS:

- 1x SHURE WBH 53T BETA (headband)
- 1x DPA 4066 (headband)
- 1x Monacor (headband)
- 2x SHURE SM58 (UR2)
- 2x SHURE BETA 58

#### WIRED:

- 4x SHURE SM11
- 4x SHURE BETA 58
- 4x SHURE SM57
- 3x SHURE BETA 87C
- 2x CROWN PZM 6D
- 2x DPA 4099
- 2x SHURE SM81
- 1x SHURE BETA 52
- 5x AKG PZM (amplification))
- 2x SHURE VP89 (cannon)

### INTERCOM SYSTEMS:

- 1x STATION CLEAR-COM MS-702
- 3x HEADPHONES
- 4x WIRED POCKETS

### LOUDSPEAKER SYSTEM:

- 1x CENTRAL STAGE
- 1x CENTRAL BACKSTAGE





## VIDEO (I)

You can reproduce images and videos on all the screens of the building.

All video and photo files will be required at least 4 business days in advance, in the specified formats and sizes, to verify their correct operation. The clients are always advised to bring their own laptop to use in case of a wrong aporations of the files.

### STAGE SCREEN

Screen LED LEDMAP 4,8m x 2,88m

Size: 800x480

Formats: .MOV .MP4 .JPG .PNG

It is possible to connect a laptop (provided by the client) from the stage for presentations and conferences.

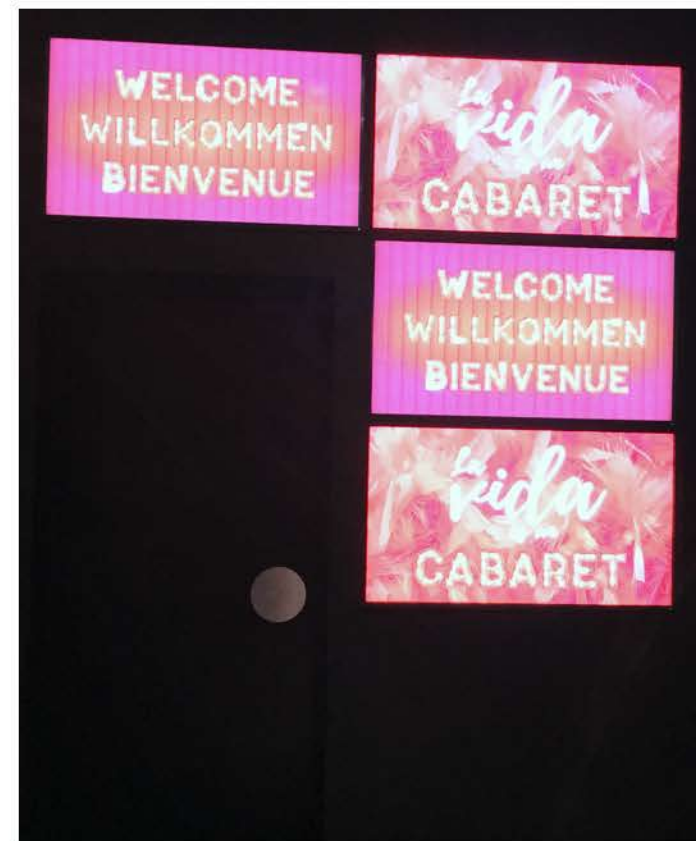
### HALL VIDEOWALL

Videowall consists of 5 screens at the hall, four 47" LCD screens on the left side placed like a inverted "L" and one 65" plasma screen on the right side, above the box office.

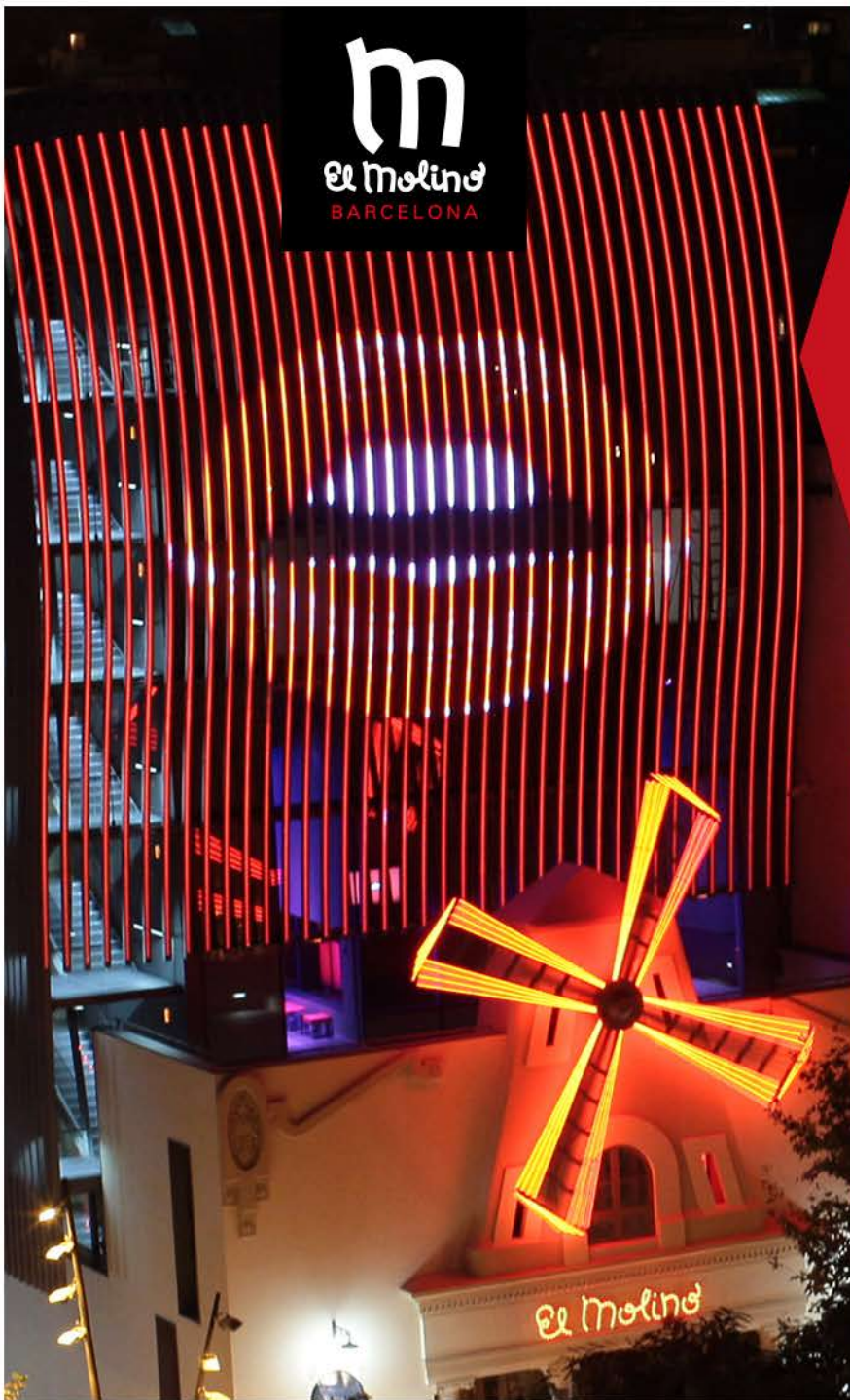
Size: 1920 x 1080

Formats: .WMV y .JPG

You can send 2 different lists to the 5 screens to reproduce 2 different contents at the same time, that offers different customizations options.







## VIDEO (II)

You can see what is happening on the stage or on the stalls through the screens at the Golden Bar, Terrace and Multipurpose Room, or also you can see the same files that are running on the hall videowall.

You can also **CUSTOMIZE THE FACADE** of El Molino with your corporate color or with elements or image effects.

### **Golden Bar:**

A projector can reproduce over the wall your chosen images or videos.

### **Terrace:**

A 47" LCD screen.

### **Multipurpose Room:**

A 47" LCD screen.

The 3 spaces share the format:

Size 1920 x 1080

Formats .wmv y .jpg

### **Facade:**

You can select the RGB color of the blades and El Molino logo.

The LED matrix can be customized in RGB colors or videos with effects or shapes (logos or slogans are not allowed by the local government).

Static image size: 39 x 237 px.

Video size: 500 x 500 px.

Videos must have a minimum of 10 seconds with format .mov codec h264.





# EL MOLINO

What do you think about our space? Would you like to come?  
If you don't know us, please call us and we will show you each corner of  
the most emblematic and welcoming place of Barcelona.  
We are waiting for you here, for information or assistance that you may  
have at any time.

Address:  
C/ Vila i Vilà, 99  
08004 - Barcelona

Phone: +34 93 205 51 11

[eva@elmolinobcn.com](mailto:eva@elmolinobcn.com)

Metro Lines 2 and 3, stop "Paral·lel"  
Bus 21, 88, 91, 121, D20, H14, V11, N0  
and N6

[www.elmolinobcn.com](http://www.elmolinobcn.com)

